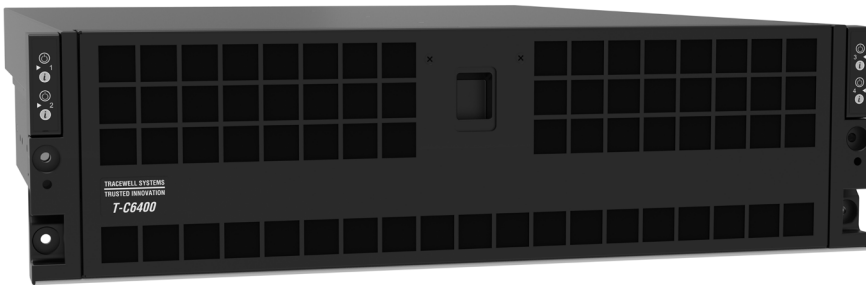


NEXT GENERATION HIGH PERFORMANCE
COMPUTING PLATFORM / MODULAR /
FLEXIBLE / PCIe ENABLED



Tracewell T-C6400/3U

BASED ON: The Dell EMC PowerEdge C Series portfolio. Designed to deliver high performance computing and a modular design to support hyperscale workloads with maximum density, scalability and efficiency.

USE CASE: Ideal for customers that require compute dense platforms and added PCIe flexibility to support high-performance workloads and edge applications in space constrained, forward deployed and tactical environments.

Benefits

DELL TECHNOLOGIES

Modular server (Intel® or AMD®) maximizes performance, density, scalability and efficiency for scale out environments. Features intuitive system management with intelligent automation and a powerful cyber resilient architecture.

TRACEWELL PLATFORMS

Features all of the benefits of the standard Dell PowerEdge C Series in a shorter depth form factor – the Tracewell product is only 24" deep, compared to 31" deep for a standard Dell product – with added PCIe capability.

DELL+ TRACEWELL

Electrically identical to standard Dell products. 'Plug and Play' components between Dell EMC products and Tracewell platforms. Order through Dell (Dell part number) and eligible for Dell warranty, service, support and secure supply chain.



SYSTEM:
24"D x 19" W x 5.2"H

FORM FACTOR HIGHLIGHTS

Representing the next generation of high-performance computing making it the ideal platform for compute dense, hyper-scale workloads at the edge.

Modular architecture makes it possible to configure full compute dense systems or to integrate PCIe capabilities into a powerful, flexible edge platform. Platform available with Intel® or AMD® processors.

MAXIMUM CONFIGURATION

Processors: 512 cores

Memory: 8TB

PCIe slots: Up to 8 low profile or
4 Full-Height, Full-Length, Double-Wide
(up to 300W each)

The Tracewell T-C6400/3U Specifications Summary

The Tracewell T-C6400 / 3U accepts standard Dell hardware configurations.

STANDARD DELL EMC PRODUCT CONFIGURATIONS

PROCESSOR TYPE	<p>Dell EMC PowerEdge C6520: 3rd Generation Intel® Xeon® Scalable processors with up to 40 cores (up to 2 processors).</p> <p>Dell EMC PowerEdge C6525: 2nd and 3rd Generation AMD® EPYC™ processor SP3, up to 64 cores (up to 2 processors).</p> <p>Dell EMC PowerEdge C6420: 2nd Generation Intel® Xeon® Scalable processor, up to 28 cores (up to 2 processors).</p>
MEMORY ARCHITECTURE	<p>Dell EMC PowerEdge C6520 / C6525: 16 DDR4 DIMM slots, supports up to 3200 MT/s RDIMM / LRDIMM, 2TB Max DDR4.</p> <p>Dell EMC PowerEdge C6420: 16 DDR4 DIMM slots, supports up to 2933 MT/s RDIMM, 1024 Max DDR4.</p>
STORAGE	<p>Diskless; Optional internal BOSS card with up to 2 x M.2 SSD's.</p>
RAID CONTROLLER	<p>No controller required for Diskless Chassis option.</p> <p>Dell EMC PowerEdge C6520 / C6525 / C6420; Internal BOSS: Hardware RAID 1 option with 2 x M.2 SSD's.</p>
VIDEO	<p>Mini Display Port. Supports Ultra High Definition (HD) 4K x 2K video resolutions, up to 4096 x 2160 @ 60Hz, including 1080p. Matrox G200 graphics controller with 16 MB of video frame buffer.</p>
PCIe SLOTS	<p>Standard Nodes: Dell EMC PowerEdge C6520 / C6525: Supports up to 2 Low-Profile PCIe x16 Gen4 and 1 OCP 3.0 PCIe x16 Gen4 (per node). Dell EMC PowerEdge C6420: Supports 1 Low-Profile PCIe x16 Gen3, 1x PCIe x16 Gen3 OCP 2.0 Mezzanine (per node).</p> <p>Expanded PCIe Nodes: Dell EMC PowerEdge C6520 / C6525 (only): Supports up to 2 Full-Height, Full-Length, Double-Wide PCIe x16 Gen4 (up to 300W each) and 1 OCP 3.0 PCIe x16 Gen4 (per node).</p>
SYSTEM MANAGEMENT	<p>Per node. Integrated Dell Remote Access Controller (iDRAC9) with Dell Lifecycle Controller. One RJ45 iDRAC9 dedicated port, and one Micro USB 2.0-compliant-port for iDRAC direct.</p>
FRONT AND REAR ACCESSIBLE I/O	<p>Rear: One nine-pin USB 3.0 port (2x per C6420) to connect USB devices. One iDRAC or NIC port to remotely access iDRAC. One mini display port to connect a display device. One iDRAC Direct micro-USB port to enable connection to a portable device or sled. Power On Buttons, one for each node.</p> <p>Front: Power On indicators, system indicators for each node; left control panel node 1 and 2, right control panel node 3 and 4.</p>
POWER SUPPLY	<p>Two power supplies supported. Available in 2600W (C6520 only), 2400W, 2000W or 1600W (C6520 / C6420 only). High-line operation with redundancy up to 2400W or 2600W. Low-line operation without redundancy up to 4800W or 2800W. Input voltage: 90-264 VAC. Maximum inrush current: 25 A (35A; 2600W and 2400W).</p>
COOLING	<p>Four high-performance fans.</p>
ENVIRONMENTAL	<p>Normal operating temp: 10°C to 35°C (50°F to 95°F). Expanded operating temp: 5°C to 40°C (41°F to 104°F) with some restrictions. Storage temp: -40°C to 65°C (-40°F to 149°F).</p>

The Tracewell T-C6400/3U Specifications Summary

The Tracewell T-C6400 / 3U accepts standard Dell hardware configurations.

TRACEWELL SYSTEMS PRODUCT CONFIGURATIONS

CHASSIS / CONSTRUCTION

Bonded aluminum low-mass chassis for rigidity with minimum weight.

CHASSIS OPTIONS

Option 1: 4-Bay chassis supports up to 4 standard nodes.

Option 2: 3-Bay chassis supports up to 2 standard nodes and 1 Expanded PCIe node.

Option 3: 2-Bay chassis supports up to 2 Expanded PCIe nodes.

Note: Expanded PCIe nodes include an additional PCIe expansion bay and are 2U height. Chassis bays are customer reconfigurable, using field upgrade kits.

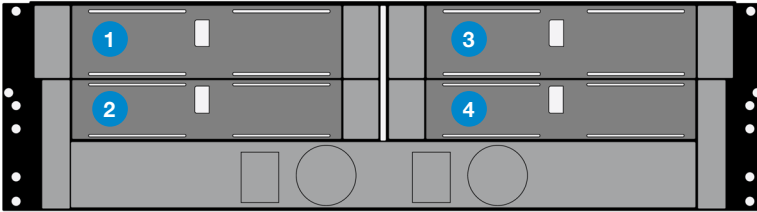
DIMENSIONS

24"D x 19"W x 5.2"H.

INSTALLATION & OPTIONS

Standard 19" rack mount use with two rack slide options. Optional Tactical Transit case integration available.

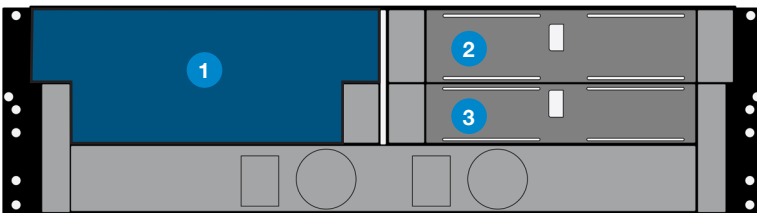
The Tracewell T-C6400/3U Configuration Options



OPTION 1 / 4 BAY

Supports up to 4 standard Dell EMC C-series nodes

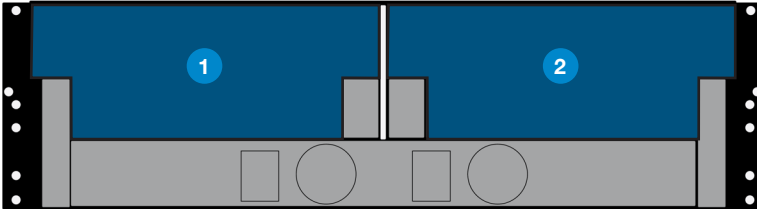
- 1 . Compute Node
- 2 . Compute Node
- 3 . Compute Node
- 4 . Compute Node



OPTION 2 / 3 BAY

Supports up to 2 standard Dell EMC C-series nodes and 1 expansion PCIe node (with accompanying Dell EMC C-series node).

- 1 . Expanded PCIe module and compute node
- 2 . Compute Node
- 3 . Compute Node



OPTION 3 / 2 BAY

Supports 2 expanded PCIe nodes (with accompanying Dell EMC C-series nodes).

- 1 . Expanded PCIe module and compute node
- 2 . Expanded PCIe module and compute node

ABOUT TRACEWELL SYSTEMS

For more than 40 years Tracewell has enabled the nation's largest military and commercial organizations to deliver powerful and reliable computing solutions in environments where size, weight, power and other constraints present challenges that cannot be met by standard computing systems. Tracewell Systems have been recognized by the top names in the defense and technology sectors for their commitment to Trusted Innovation – a process where the company solves previously impossible, sensitive, mission-critical platform challenges through customer solution design, engineering and manufacturing, all under one roof. More information: www.tracewell.com.

©2022 Tracewell Systems, Inc.

Tracewell Systems, Inc. reserves the right to make changes without notice. All brand or product names may be trademarks or registered trademarks of their respective holders.

June 2022 | Version 1.0 Tracewell T-C6400/3U At A Glance