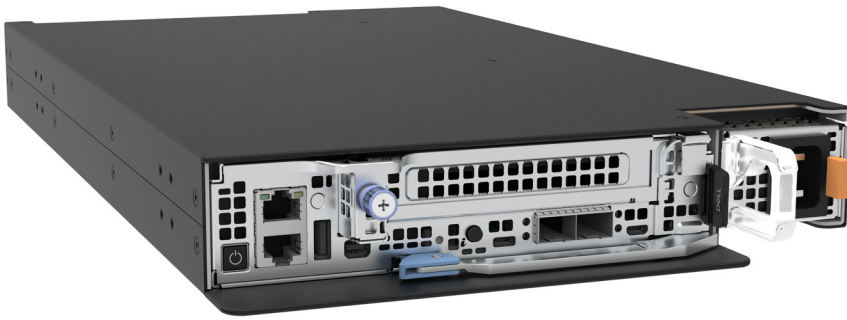


COMPACT CHASSIS / HIGH-PERFORMANCE
/ BUILT FOR THE EDGE / PLUG AND PLAY
STANDARD DELL COMPUTE SLEDS



Tracewell T-XR8000-1P (single slot 'mini' chassis)

BASED ON: The new Dell Technologies PowerEdge XR8000 is one of the company's most compact servers to date. Built to withstand challenging environments at the edge, the XR8000 offers high-performance computing in a unique "chassis and compute sled", making it the optimal mix of power and size.

USE CASE: Tracewell Systems XR8000 Extensions make it possible to do more with Dell Technologies. The Tracewell T-XR8000-1P is ideal for customers who want a high-performance, on-the-go compute platform optimized for the edge. Standard Dell compute sleds insert into the "mini" chassis (it is "pluggable") making it the perfect platform for customers that want to extend their Dell XR8000-based applications on a common hardware footprint across their data center and edge operations.

Benefits

DELL TECHNOLOGIES

The new Dell PowerEdge XR8000 is purpose built to deliver high-performance computing in edge environments. The multi-node chassis form factor supports up to 4 compute nodes offering a broad range of configurations and flexibility.

TRACEWELL PLATFORMS

All of the benefits of the Dell PowerEdge XR8000 in a compact ('mini') one-slot chassis that makes it possible to plug in standard Dell compute sleds. Portable chassis delivers a high-performance platform for commercial, OEM and defense organizations.

DELL+ TRACEWELL

Electrically identical to standard Dell PowerEdge products. "Plug and play" components between Dell PowerEdge products and Tracewell platforms. Order through Dell (Dell PowerEdge part number) and eligible for Dell PowerEdge warranty, service, support and secure supply chain.



SYSTEM:
1.8"H x 10.1"W x 18.2"D

FORM FACTOR HIGHLIGHTS

Compact, single-slot chassis supports standard Dell PowerEdge compute sleds.

High-performance computing platform built specifically for edge environments.

Size and weight make it ideal for 'carry with' (backpackable) or 'carry on' (Airline Transportation Associate compliant) applications.

Part of a family of platforms that extend what's possible with Dell PowerEdge XR8000-based products. Additional platform designs are available.

The Tracewell T-XR8000-1P (single slot ‘mini’ chassis)

Specifications Summary

The Tracewell T-XR8000-1P (single slot ‘mini’ chassis) accepts standard Dell hardware configurations.

STANDARD DELL POWEREDGE XR8000 PRODUCT CONFIGURATIONS

PROCESSOR TYPE	XR8610t (1U); 4th Generation Intel Xeon processor up to 32 cores.
MEMORY ARCHITECTURE	XR8610t (1U); 8 DDR5 DIMM slots, up to 4800 MT/s RDIMM.
STORAGE	XR8610t (1U); 2x M.2 2280 BOSS-N1 with RAID 0/1.
RAID CONTROLLER	None supported.
VIDEO	XR8610t; integrated Matrox G200 graphics controller embedded in the iDRAC (BMC) chip with 16 MB of video frame buffer.
PCIe SLOTS	XR8610t (1U); 1 x16 PCIe (Gen 5) full height (FH) slot.
NETWORK	XR8610t; 2x 25 GbE SFP 28 on board LOM (Optional), 1x 1GbE management port, various PCIe NIC options.
SYSTEM MANAGEMENT	XR8610t; LC 3.x, OpenManage, OMPC3, Digital License Key, iDRAC Direct (dedicated micro-USB port), Easy Restore, iDRAC9 RJ45 (dedicated port).
ACCESSIBLE I/O	XR8610t per node; One nine-pin USB 3.0 port to connect USB devices. 2x 25 GbE SFP 28 on board LOM (Optional). 1x USB 3.0. 1x iDRAC Direct Port (Micro-AB USB). 1x Micro-USB Serial Port. 1x Mini display port to connect a display device. 1x RJ-45 iDRAC9 remote management (dedicated port only). 1x RJ-45 Alert/Dry Contact input connector. Power On Buttons, one for each node.

The Tracewell T-XR8000-1P (single slot ‘mini’ chassis)

Specifications Summary

The Tracewell T-XR8000-1P (single slot ‘mini’ chassis) accepts standard Dell hardware configurations.

POWER SUPPLY	One power supply supported. Available in 1800W Mixed Mode AC, or 1100W, 800W DC. High-line AC operation up to 1800W. Low-line AC operation up to 1400W. DC operation up to 1400W, 1100W, 800W (1400W, 1100W, 800W DC). Input voltage: 100-240 VAC, -48-(-60) VDC, Maximum current: 12 A or 12-8 A (AC), 6.6 A to 33.5 A (DC).
COOLING	XR8610t; up to 4 standard cable fans (per node).
ENVIRONMENTAL	Normal operating temp: -5°C to 55°C with startup of 0°C (23°F to 131°F) with some restrictions. Storage temp: -40°C to 85°C (-40°F to 185°F).

Tracewell Systems

Product Configurations

CHASSIS CONSTRUCTION	Bonded aluminum low-mass chassis for rigidity with minimum weight. Pluggable server format.
CHASSIS SLED SLOTS	1-Node chassis supports; up to 1x XR8610t nodes.
DIMENSIONS	T-XR8000-1P: 18.2"L x 10.1"W x 1.8"H; 13.75 lbs. (configuration dependent).
INSTALLATION AND OPTIONS	Designed for benchtop operation. Includes threaded hard points to support various mounting options. Compact ATA compliant transport case (OPTIONAL).

Above specifications are derived from the standard Dell XR8000 product.

ABOUT TRACEWELL SYSTEMS

For five decades Tracewell has enabled the nation’s largest military and commercial organizations to deliver powerful and reliable computing solutions in environments where size, weight, power and other constraints present challenges that cannot be met by standard computing systems. Tracewell Systems have been recognized by the top names in the defense and technology sectors for their commitment to Trusted Innovation – a process where the company solves previously impossible, sensitive, mission-critical platform challenges through customer solution design, engineering and manufacturing, all under one roof. More information: www.tracewell.com.